



**Media Release
February 11, 2015
Pangborn Memorial Airport Has Record
Enplanements in 2014**



Activity at Pangborn Memorial Airport in 2014 exceeded expectations, and reached record numbers of passengers flying in and out. Enplanements, the number of passengers flying through Pangborn on Alaska Air, were up every month in 2014. Peak months included August, October and December. The overall total of passengers flying in and out of Pangborn Memorial Airport was 110,600. This is especially impressive considering 2013 was one of the best years ever for Pangborn Airport with 101,763 passengers.

Increasing numbers of passengers has pushed the load factor, the percentage of seats purchased, over the 75% mark three months in 2014 and to nearly 72% for the entire year. Port of Chelan County Commission President Mike Mackey remarked, "The flying public recognizes the convenience and accessibility of flying local." The launch of the new Fly Wenatchee brand and advertising support from the Small Community Air Service Development Program which kicked off in August also reminded residents of the convenient flights.

The increase in passengers sends a strong message to Alaska Airlines and potential air carriers looking to expand service in Wenatchee. Full flights means more flights. The enplanement numbers and the Runway Extension Project is a recipe for added air service.

Beyond enplanements, car rental activity at the airport was up over 30%, year over year, reflecting increased business and leisure travel to north central Washington. Parking revenue was also up 20% in 2014.

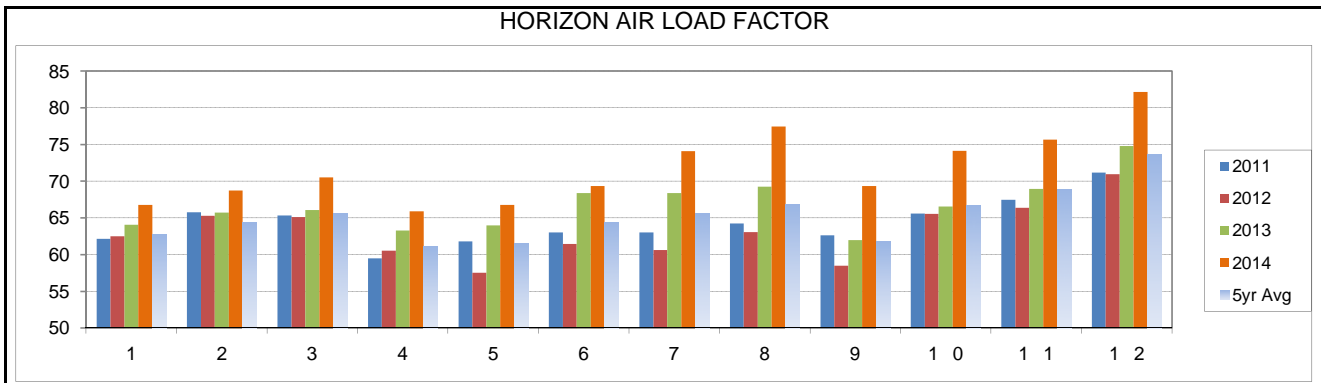
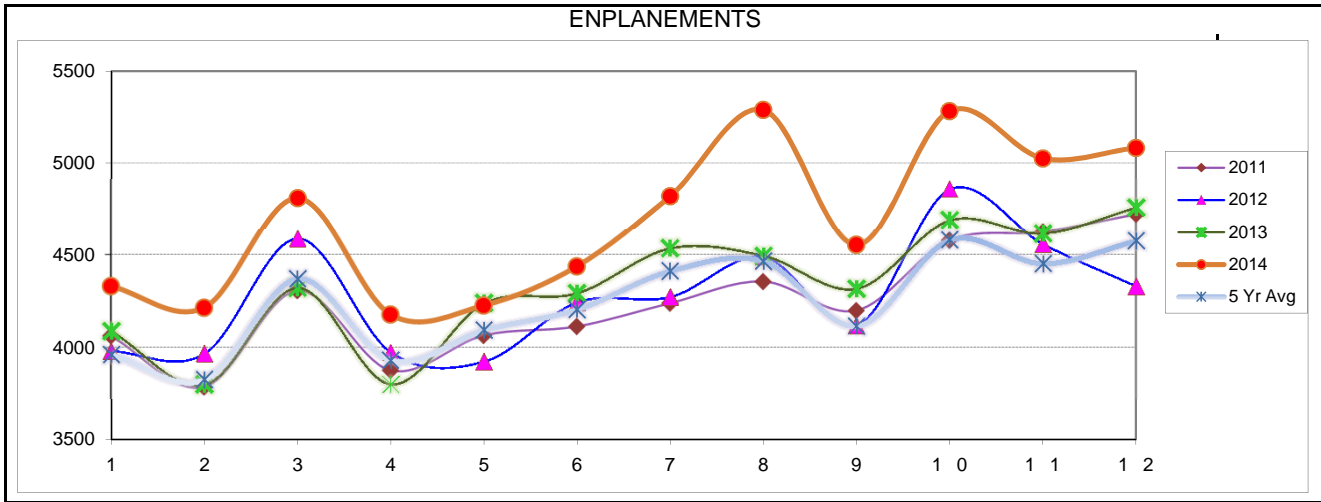
A copy of the 2014 activity report is attached. If you have additional questions, please contact Craig Larsen, Port of Chelan County Director of Business Development, at 509-663-5159.

For further information, please contact:

Trent Moyers, Pangborn Memorial Airport Director, (509) 884-2494



Pangborn Memorial Airport
Activity Report
December 2014



MONTH	2013			2014 PASSENGERS			%2014 Vs 2013		
	On	Off	Total	On	Off	Total	On	Off	Total
Jan	4,074	3,813	7,887	4,330	4,094	8,424	106.3%	107.4%	106.8%
Feb	3,784	3,710	7,494	4,214	4,143	8,357	111.4%	111.7%	111.5%
Mar	4,313	4,174	8,487	4,810	4,518	9,328	111.5%	108.2%	109.9%
Apr	3,804	4,132	7,936	4,178	4,434	8,612	109.8%	107.3%	108.5%
May	4,241	4,316	8,557	4,226	4,400	8,626	99.6%	101.9%	100.8%
Jun	4,295	4,334	8,629	4,436	4,420	8,856	103.3%	102.0%	102.6%
Jul	4,527	4,415	8,942	4,820	4,864	9,684	106.5%	110.2%	108.3%
Aug	4,496	4,243	8,739	5,289	4,838	10,127	117.6%	114.0%	115.9%
Sep	4,319	3,973	8,292	4,552	4,196	8,748	105.4%	105.6%	105.5%
Oct	4,688	4,216	8,904	5,283	4,633	9,916	112.7%	109.9%	111.4%
Nov	4,617	4,184	8,801	5,026	4,405	9,431	108.9%	105.3%	107.2%
Dec	4,757	4,338	9,095	5,408	5,083	10,491	113.7%	117.2%	115.3%
TO DATE	51,915	49,848	101,763	56,572	54,028	110,600	109.0%	108.4%	108.7%
TOTALS	51,915	49,848	101,763						

Pangborn Memorial Airport
Activity Report
December 2014

CAR RENTALS	2013				2014				%2014 Vs 2013
	Budget	Enterprise	Hertz	Total	Budget	Enterprise	Hertz	Total	
Jan	\$ 19,898	\$ 6,339	\$ 32,464	\$ 58,702	\$ 25,116	\$ 3,999	\$ 34,858	63,973	109.0%
Feb	16,023	9,027	31,078	\$ 56,128	30,427	4,872	38,466	73,765	131.4%
Mar	20,035	9,949	33,013	\$ 62,996	38,396	8,661	43,500	90,556	143.7%
Apr	27,130	8,660	25,987	\$ 61,777	38,440	6,530	31,956	76,926	124.5%
May	28,487	11,802	39,010	\$ 79,299	42,879	7,033	35,681	85,594	107.9%
Jun	32,228	9,328	26,894	\$ 68,450	52,219	9,428	48,622	110,270	161.1%
Jul	43,768	14,990	48,553	\$ 107,311	61,000	9,541	54,271	124,812	116.3%
Aug	51,055	12,555	38,926	\$ 102,536	85,167	24,620	72,276	182,062	177.6%
Sep	36,420	12,743	41,646	\$ 90,809	42,140	29,362	46,158	117,661	129.6%
Oct	44,364	8,964	38,347	\$ 91,675	48,925	8,034	40,590	97,548	106.4%
Nov	29,968	7,924	28,817	\$ 66,708	37,528	5,452	35,517	78,497	117.7%
Dec	28,648	6,696	35,262	\$ 70,606	45,248	5,536	47,339	98,123	139.0%
TO DATE	\$ 378,023	\$ 118,977	\$ 419,998	\$ 916,997	\$ 547,485	\$ 123,069	\$ 529,233	\$ 1,199,787	130.8%
TOTALS	\$ 378,023	\$ 118,977	\$ 419,998	\$ 916,997					

Note: Numbers represent total car rental revenue. The airport receives 10% of the total.

FUEL SALES	2013			2014			%2014 Vs 2013
	Jet A	Av Gas	Total	Jet A	Av Gas	Total	
Jan	4370.0	1144.1	5514.1	2212.0	1427.4	3639.4	66.0%
Feb	707.0	1877.1	2584.1	5817.0	551.2	6368.2	246.4%
Mar	2454.0	2919.5	5373.5	8515.0	1822.2	10337.2	192.4%
Apr	1719.0	2363.8	4082.8	3485.0	2513.8	5998.8	146.9%
May	2690.0	3509.2	6199.2	3286.0	3290.6	6576.6	106.1%
Jun	5743.0	4732.5	10475.5	9959.0	7036.3	16995.3	162.2%
Jul	12397.0	7227.8	19624.8	43639.0	11533.4	55172.4	281.1%
Aug	12123.0	9663.3	21786.3	23941.0	13156.3	37097.3	170.3%
Sep	3780.0	4496.0	8276.0	11338.0	4942.0	16280.0	196.7%
Oct	1466.0	3632.0	5098.0	2332.0	3378.1	5710.1	112.0%
Nov	1876.0	1497.3	3373.3	2608.8	4815.0	7423.8	220.1%
Dec	2248.0	1157.5	3405.5	2194.0	1484.7	3678.7	108.0%
TO DATE	51573.0	44220.2	95793.2	119326.8	55950.9	175277.7	183.0%
TOTALS	51573.0	44220.2	95793.2				

Note: Numbers shown are Gallons Sold

PARKING	2013	2014	%2014 Vs 2013
MONTH			
Jan	\$ 19,845	\$ 28,433	143.3%
Feb	22,067	31,263	141.7%
Mar	24,424	33,530	137.3%
Apr	23,770	27,689	116.5%
May	21,669	29,022	133.9%
Jun	19,473	23,890	122.7%
Jul	17,255	24,285	140.7%
Aug	22,189	24,663	111.2%
Sep	25,829	29,251	113.3%
Oct	34,270	35,485	103.5%
Nov	30,209	31,241	103.4%
Dec	24,454	27,927	114.2%
TO DATE	\$ 285,453	\$ 346,679	121.4%
TOTALS	\$ 285,453		

Note: Numbers represent total parking revenue. The airport receives a percentage of the total.
Minimum annual guarantee of \$138,000. *Parking rates were increased August 2013.*