



Media Release
July 24, 2015

**PANGBORN MEMORIAL AIRPORT CONTINUES STRONG PERFORMANCE
THROUGH THE FIRST HALF OF 2015**

Despite lower numbers in January caused by weather cancellations, the number of passengers using Pangborn Memorial Airport in the first 6 months of 2015 is significantly ahead of 2014 levels. Enplanements, the number of passengers flying through Pangborn on Alaska Air, are up 11.2% in the first six months of 2015 versus the first six months of 2014. This is especially impressive considering 2014 was the second best year ever for Pangborn enplanements. Pangborn is on pace to set an enplanements record in 2015.

Increasing numbers of passengers has pushed the load factor, the percentage of seats purchased, to the 77% mark for the year. Port of Chelan County Commission President Mike Mackey reacted to the good news saying, "Continued strong passenger growth lays a great foundation for Pangborn to attract new air service when the runway extension is complete in the fall of 2016." Strong load factors usually result in profitability of routes for airlines. In a deregulated market, airline service to our community is dependent upon the profitability of the Wenatchee to Seattle route, especially for those using Seattle as the connection to other destinations.

Advertising support for the FlyWenatchee brand funded in part from the Small Community Air Service Development Program should support further strong enplanement numbers in the months and years ahead. Current advertising efforts are focused on cities outside Washington with the goal of enticing visitors to fly to our region. A key component of the marketing efforts has been the creation of short videos promoting the region which can be found on the Pangborn Memorial Airport YouTube channel. The first set of videos were very successful, leading to a second set that will start being released in the weeks ahead.

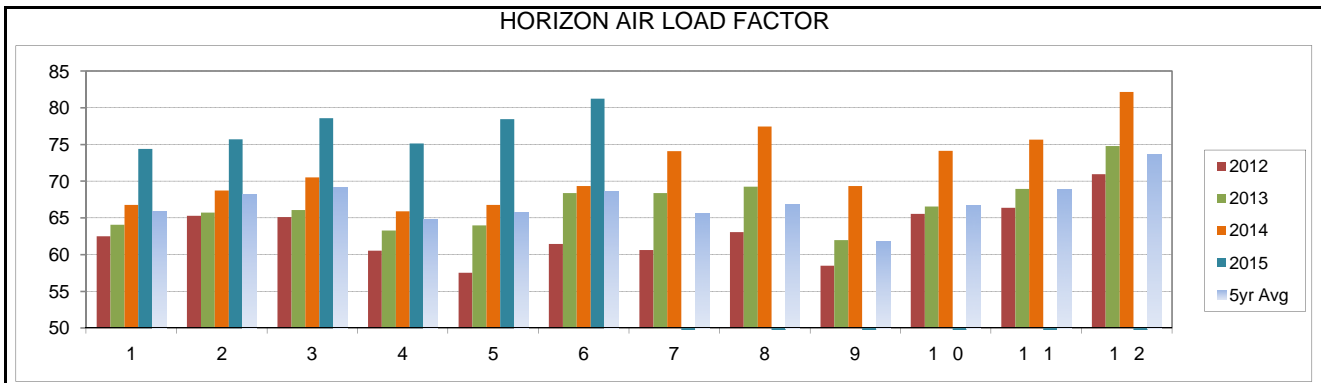
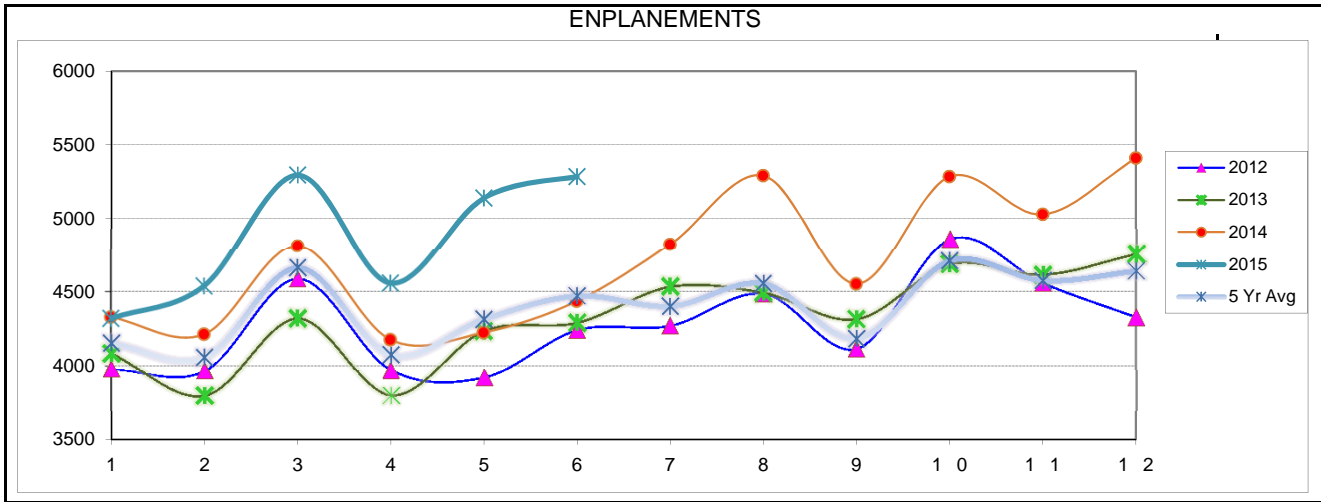
Beyond enplanements, car rental activity at the airport is up over 15%, year over year, reflecting increased business and leisure travel to the region. Parking usage and revenue has also increased by more than 13% when compared to the first six months of 2014

A copy of the Pangborn Memorial Airport Activity Report for the first six months of 2015 is attached.

Please contact Craig Larsen, Port of Chelan County Director of Business Development, at 509-663-5159 for additional information.



Pangborn Memorial Airport
Activity Report
June 2015



MONTH	2014			2015 PASSENGERS			%2015 Vs 2014		
	On	Off	Total	On	Off	Total	On	Off	Total
Jan	4,330	4,094	8,424	4,320	3,936	8,256	99.8%	96.1%	98.0%
Feb	4,214	4,143	8,357	4,538	4,437	8,975	107.7%	107.1%	107.4%
Mar	4,810	4,518	9,328	5,293	5,100	10,393	110.0%	112.9%	111.4%
Apr	4,178	4,434	8,612	4,557	4,979	9,536	109.1%	112.3%	110.7%
May	4,226	4,400	8,626	5,138	5,238	10,376	121.6%	119.0%	120.3%
Jun	4,436	4,420	8,856	5,284	5,214	10,498	119.1%	118.0%	118.5%
Jul	4,820	4,864	9,684						
Aug	5,289	4,838	10,127						
Sep	4,552	4,196	8,748						
Oct	5,283	4,633	9,916						
Nov	5,026	4,405	9,431						
Dec	5,408	5,083	10,491						
TO DATE	26,194	26,009	52,203	29,130	28,904	58,034	111.2%	111.1%	111.2%
TOTALS	56,572	54,028	110,600						

Pangborn Memorial Airport
Activity Report
June 2015

CAR RENTALS	2014				2015				%2015 Vs 2014
	Budget	Enterprise	Hertz	Total	Budget	Enterprise	Hertz	Total	
MONTH									
Jan	\$ 25,116	\$ 3,999	\$ 34,858	\$ 63,973	\$ 40,911	\$ 8,228	\$ 48,884	98,024	153.2%
Feb	30,427	4,872	38,466	\$ 73,765	36,599	5,695	47,673	89,967	122.0%
Mar	38,396	8,661	43,500	\$ 90,556	36,775	7,555	37,929	82,260	90.8%
Apr	38,440	6,530	31,956	\$ 76,926	39,705	8,527	36,233	84,465	109.8%
May	42,879	7,033	35,681	\$ 85,594	44,705	17,683	37,715	100,103	117.0%
Jun	52,219	9,428	48,622	\$ 110,270	66,664	11,281	45,353	123,298	111.8%
Jul	61,000	9,541	54,271	\$ 124,812					
Aug	85,167	24,620	72,276	\$ 182,062					
Sep	42,140	29,362	46,158	\$ 117,661					
Oct	48,925	8,034	40,590	\$ 97,548					
Nov	37,528	5,452	35,517	\$ 78,497					
Dec	45,248	5,536	47,339	\$ 98,123					
TO DATE	\$ 227,477	\$ 40,523	\$ 233,083	\$ 501,084	\$ 265,360	\$ 58,970	\$ 253,787	\$ 578,117	115.4%
TOTALS	\$ 547,485	\$ 123,069	\$ 529,233	\$ 1,199,787					

Note: Numbers represent total car rental revenue. The airport receives 10% of the total.

FUEL SALES	2014			2015			%2015 Vs 2014
	Jet A	Av Gas	Total	Jet A	Av Gas	Total	
MONTH							
Jan	2212.0	1427.4	3639.4	2572.0	1229.6	3801.6	104.5%
Feb	5817.0	551.2	6368.2	2441.0	1917.9	4358.9	68.4%
Mar	8515.0	1822.2	10337.2	3293.0	2788.0	6081.0	58.8%
Apr	3485.0	2513.8	5998.8	4235.0	2025.4	6260.4	104.4%
May	3286.0	3290.6	6576.6	6141.0	3197.4	9338.4	142.0%
Jun	9959.0	7036.3	16995.3	7204.0	6053.3	13257.3	78.0%
Jul	43639.0	11533.4	55172.4				
Aug	23941.0	13156.3	37097.3				
Sep	11338.0	4942.0	16280.0				
Oct	2332.0	3378.1	5710.1				
Nov	2608.8	4815.0	7423.8				
Dec	2194.0	1484.7	3678.7				
TO DATE	33274.0	16641.5	49915.5	25886.0	17211.5	43097.5	86.3%
TOTALS	119326.8	55950.9	175277.7				

Note: Numbers shown are Gallons Sold

PARKING	2014	2015	%2015 Vs 2014
MONTH			
Jan	\$ 28,433	\$ 29,525	103.8%
Feb	31,263	34,168	109.3%
Mar	33,530	38,838	115.8%
Apr	27,689	34,094	123.1%
May	29,022	33,229	114.5%
Jun	23,890	26,842	112.4%
Jul	24,285		
Aug	24,663		
Sep	29,251		
Oct	35,485		
Nov	31,241		
Dec	27,927		
TO DATE	\$ 173,827	\$ 196,695	113.2%
TOTALS	\$ 346,679		

Note: Numbers represent total parking revenue. The airport receives a percentage of the total.
Minimum annual guarantee of \$138,000. *Parking rates were increased August 2013.*